

I'm gonna be (500 miles) (Craig & Charles Reid - Arr. Wayne Richmond, 2012)

But I would walk five hundred miles and-a I would walk five hundred more
Just to be the man who walks a thousand miles to fall down at your door.

Caledonia (Dougie Maclean - Adapted from an arrangement by Dougie Maclean & Andrew Russel)

And let me tell you that I love you, and I think about you all the time.

Caledonia you're calling me and now I'm going home.

For if I should become a stranger,

You know that it would make me more than sad,

Caledonia's been ev'rything I ever had.

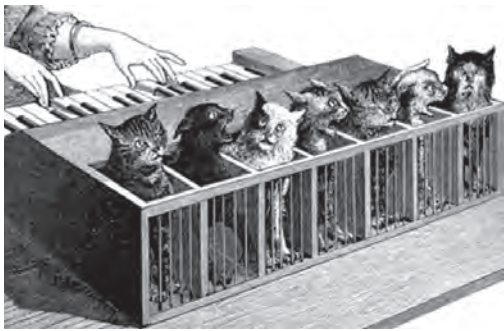
Loosely Woven

David Allcroft vocals
Elizabeth Allcroft vocals
Barbara Braithwaite vocals
Kristy Dickson vocals
Noni Dickson harp, vocals, choreography
Helena Douglas vocals
Eric Eisler guitar, mandolin, violin, drums, vocals
Susan Greenfield vocals
Sandra Hava vocals
Lynette Johnson vocals
Nina Kharakoz accordion, vocals
Gial Leslie glockenspiel, vocals
John Macrae clarinets, saxophones, recorders, flutes, vocals
Stephen Malloch violin, vocals
Rima Muir vocals



In memory of
Max Sell
(1929-2011)
& Bae Sell
(1932-2012)

Fiona Munro violin, viola, vocals
Glenys Murray vocals
Samantha O'Brien flute, saxophone, vocals
Max Prince vocals
Wayne Richmond keyboard, concertina, vocals
Pat Russell vocals
Jill Stubington conductor, piano
Greg Thompson guitar, vocals
Luke Waterlow vocals
Meredith Williams vocals, flute
David Wilson vocals
Marjorie Wilson vocals



To be put on the Loosely Woven/Humph Hall email list or for information, contact
Wayne: (02) 9939 8802 wayne@humphhall.org

See photos & stuff on the Loosely Woven web site at: looselywoven.org

One Voice

St Davids Uniting Church, DY
2pm Sunday 29th July 2012

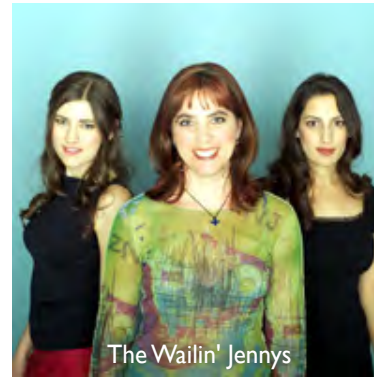
Boronia Park Uniting Church
7.30pm Friday 3rd August 2012

Concord Presbyterian Church
7pm Saturday 4th August 2012

Avalon Baptist Peace Church
4pm Sunday 5th August 2012

St Andrews Uniting Church
7pm Friday 10th August 2012

Humph Hall, Allambie Heights
7pm Fri 17th & 2pm Sun 19th August 2012



The Wailin' Jennys

One Voice (Ruth Moody - Arr. Samantha O'Brien, 2012)

Corner of the Sky
(Stephen Schwartz - Arr. Maria Dunn, 2012)

Circus Tune (Nina Kharakoz)

Overlanders/Andy's Gone with Cattle
(W: Henry Lawson M: trad. - Arr. Jill Stubington, 2012)

Working Man (Rita MacNeil - Arr. Noni Dickson, 2012)

Stranger in Paradise
(Robert Wright & George Forrest - Arr. Maria Dunn, 2012)



Henry Lawson



Tiger

(Benny Andersson & Bjorn Ulvaeus - Arr. Samantha O'Brien, 2012)

I am behind you, I always find you, I am the tiger.
People who fear me, never go near me, I am the tiger.

You'll never walk alone

(Rogers & Hammerstein - from 'Carousel' - Arr. Samantha O'Brien, '12)

Bibidi-Bobbidi-Boo

(W: Jerry Livingston M: Mack David & Al Hoffman - Arr. Wayne Richmond, '12)

Fix You (Goldplay - Arr. Samantha O'Brien, 2012)

Lights will guide you home and ignite your bones
And I will try to fix you.

Tears stream, down your face
When you lose something you cannot replace
Tears stream, down your face and I . . .

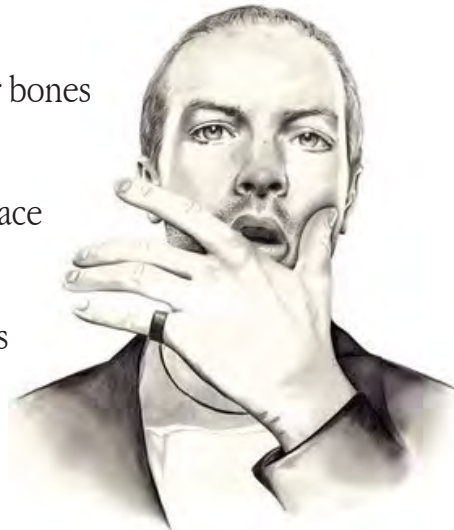
Tears stream, down your face
I promise you I will learn from my mistakes
Tears stream, down your face and I . . .



Bruce Watson

If you can walk you can dance,
If you can talk you can sing

(Bruce Watson - Adapted from an arr. by Bronwyn Calcutt)



Chris Martin from 'Coldplay'

--- Interval ---

You don't speak for me

(Judy Small - Arr. Wayne Richmond, 2012)

Beacon (Nardi Simpson, sung by Stiff Gins - Arr. Jill Stubington, 2012)

Sing about life

(Lou Bennett, sung by Tiddas - Arr. Jill Stubington, 2012)

The Impossible Dream

(M: Mitch Leigh W: Joe Darion - Arr. Samantha O'Brien, 2012)

The Belfast Polka/Pennsylvania Railway

(Phil Coulter - Arr. Samantha O'Brien, 2012)

Softly as I leave you

(W: Harold David Shaper M: Antonia DeVita - Arr. Wayne Richmond, 2012)

Softly I will leave you, softly for my heart would break
If you should wake & see me go, so I leave you
Softly long before you miss me, long before your
Arms can beg me stay for one more hour or one more day.
After all the years I can't bear the tears to fall so
Softly as I leave you there.



Matt Monro

Good luck to the Barley Mow

(Trad. as sung by The Irish Rovers - Arr. Wayne Richmond, 2012)

Here's good luck to the pint pot, good luck to the barley mow.
Jolly good luck to the pint pot, good luck to the barley mow.
O the pint pot, half a pint, gill, half a gill, quarter gill,
Nipperkin and a round bowl,
Here's good luck, good luck, good luck to the barley mow.



Sunas

Ride On (Sunas - Arr. Maria Dunn, 2012)

Ride on, see you,
I could never go with you no matter how I wanted to.



Judy Small